

Highlander

2015



Ready for those with full lives and big plans.

The best discoveries are the ones we can share, the ones where the journey is just as fun as the destination. The 2015 Toyota Highlander, with seating for up to eight, advanced luxury and stylish design, is eager to help you explore. Let's live life to the fullest with every trip, no matter where we're headed. Let's get the journey started.

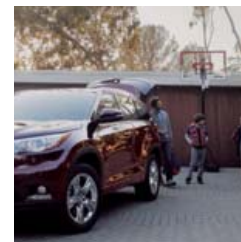
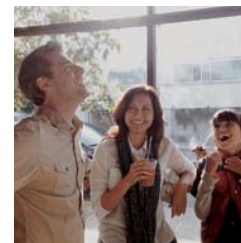


XLE AWD shown in Nautical Blue Metallic. Hybrid Limited shown in Blizzard Pearl with available Platinum Package. LE shown in Shoreline Blue Pearl. LE Plus shown in Attitude Black Metallic with available accessory running boards and roof rail cross bars. Limited shown in Ooh La La Rouge Mica with available Platinum Package. 2014 models shown.



Everybody in. Another adventure awaits.

Make the most of your weeks and your weekends in the 2015 Highlander. Whether you're looking to get away or just get around town, you'll find Highlander's responsive handling makes driving more fun. But that's just the beginning — designed with excitement in mind, the exterior boasts a dramatic grille and can be topped off with available integrated aerodynamic roof rails. All these features add up to an SUV that's ready to help you make the most out of any adventure. Let's go places.



Everyone is ready. Now comes the best part: deciding on all the fun things you'll want to do.



Limited shown in Ooh La La Rouge Mica with available Platinum Package.

Comfort that's always a crowd-pleaser.

A big part of enhancing the driving experience is making sure everyone is comfortable. Sometimes a short trip turns into a long one, so that's why we turned up the comfort in unexpected places. Like an available heated steering wheel for the driver and available heated second-row seating for the passengers in the back. There are also plenty of smart storage compartments so your most-needed items are easily accessible throughout your journey. Highlander is designed to be just as versatile, fun and comfortable as you need, because some of the best memories are the ones you don't plan for.



HEATED AND VENTILATED FRONT SEATS

Another reason to call shotgun. Highlander offers available heated and ventilated front seats with heaters and fans right inside your seat, keeping you comfortable no matter the weather.



ACCENT STITCHING ON SEATS

When designing the Highlander interior, we didn't leave anything out. Take a closer look at the seats, and you'll notice available genuine-thread seat stitching that adds visual color contrast and unique style.



OVERSIZE ROLL-TOP CENTER CONSOLE

Everything in its place. The roll-top center console is an armrest and a storage spot, with easy access to a massive compartment for large purses, bags, cameras and other items that may end up out of reach.



Limited interior shown in Black with Clove accent, with available Platinum Package. iPhone® accessory is not included. iPhone® is a registered trademark of Apple Inc. All rights reserved.

Fits your world. With room to spare.

Highlander is one powerful and functional performer. Innovative features like an available power liftgate with flip-up rear hatch window offer exceptional utility. With seating for up to eight and spacious cargo area, Highlander has room for it all. Want to relax? With the push of a button, you can open up the available panoramic moonroof and enjoy the view. A driver's seat with available memory settings, a second row that slides and reclines, and third-row seats with a 60/40 split and the ability to fold flat help make Highlander as accommodating as you need.



CARGO SPACE

Waste no space. We designed the rear suspension of Highlander to maximize the space in the cargo area. This gives you plenty of room behind the third row for your gear.



ADJUSTABLE POWER LIFTGATE

You can open the rear liftgate with the press of a button and adjust how high it opens with this available feature. If you have a garage with low clearance or a covered parking spot, you know how much this matters.



FLIP-UP REAR GLASS HATCH WINDOW

No need to open the entire liftgate to quickly grab something small. Just use the available flip-up hatch window for easy access.



XLE interior shown in Ash with Blue accent and available rear-seat Blu-ray Disc™ entertainment system.

Here comes life. Are you ready?

There's a lot that goes into each day, and Highlander has thought of everything, starting with making getting in and out of your Highlander even easier. Sound-dampening insulation creates a quieter interior, and there are plenty of convenience features, like a conversation mirror so you can easily see those in the back. Standard *Bluetooth*^{®1} wireless capability lets you take calls and stream music² without taking your hands off the wheel. And you can search points of interest with available Entune™ Premium Audio with Navigation³ and App Suite.⁴



PANORAMIC MOONROOF

In-seat entertainment for everyone. Your passengers have the whole sky to entertain them thanks to the available panoramic moonroof.



REAR-SEAT ENTERTAINMENT

Entertaining from the driver's seat is tough. Let the available rear-seat DVD entertainment system help. The Blu-ray Disc™ player with 9-in. display screen comes with RCA jacks, remote and two wireless headphones.⁵



STANDARD BACKUP CAMERA⁶ WITH PROJECTED PATH

When it comes to safety and convenience, Highlander delivers. Whether you're backing up or parallel parking, the standard backup camera can serve as a guide by showing what the camera detects on the touch-screen display.

1. See footnote 10 in Disclosures section. 2. See footnote 9 in Disclosures section. 3. See footnote 13 in Disclosures section. 4. See footnote 14 in Disclosures section. 5. See footnote 15 in Disclosures section. 6. See footnote 4 in Disclosures section.



Limited interior shown in Black with Clove accent, with available Platinum Package.

Explore with confidence. You're surrounded by safety.

Keeping your family safe is a top priority, especially on the road. That's why Highlander has safety features and performance options to help you get where you are going safely and with more confidence. And when the journey gets adventurous, Highlander embraces it with available Dynamic Torque-Control AWD, which distributes engine power from front to rear and manages the vehicle's braking system from side to side, helping to give you better control. Now you're ready to tackle just about any adventure you find along the way.



AVAILABLE BLIND SPOT MONITOR (BSM)¹ WITH REAR CROSS-TRAFFIC ALERT (RCTA)²

It's like a second set of eyes. Even when your Highlander's outside mirrors are properly adjusted, you still may have trouble seeing cars to the side and rear of you in the next lane. Using radar technology, the available Blind Spot Monitor with Rear Cross-Traffic Alert can help warn you that a vehicle is there by illuminating an indicator on the appropriate outside mirror.



AVAILABLE LANE DEPARTURE ALERT (LDA)³ AND PRE-COLLISION SYSTEM (PCS)⁴

The Lane Departure Alert is designed to warn you should it detect your vehicle drifting out of its lane. The Pre-Collision System employs radar to help determine if a frontal collision is imminent, alerts the driver via visual and audible warnings, and automatically applies the brakes to help slow the vehicle and help reduce the effects of a collision.



AVAILABLE 5000-LB. TOWING CAPACITY⁵

Some adventures are so big you have to tow them. No problem. Highlander can tow up to 5000 lb.



POWER THAT'S READY TO GO

Wherever the day takes you, you have the power to get there. Highlander's available V6 engine generates 270 horsepower and still offers up to an EPA-estimated 19 mpg city and 25 mpg highway¹ on FWD models. The 6-speed automatic transmission was designed for a drive with impressive acceleration and reduced fuel consumption.

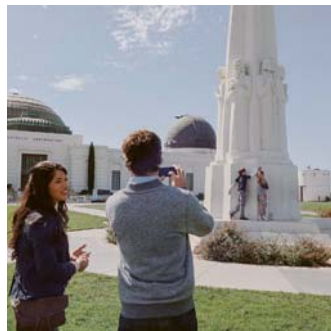
XLE AWD shown in Nautical Blue Metallic. 2014 model shown.

1. See footnote 41 in Disclosures section.

The 2015 Highlander. Fill every day with more fun.



Limited shown in Ooh La La Rouge Mica with available Platinum Package.



*The perfect end to the
perfect day. Let's do it all
over again tomorrow.*

Color



Attitude Black Metallic



Nautical Blue Metallic



Shoreline Blue Pearl



Alumina Jade Metallic



Ooh La La Rouge Mica



Crème Brulee Mica



Predawn Gray Mica



Silver Sky Metallic



Blizzard Pearl¹

*Not all trims available on all model grades. See dealer for details.

Trim



LE fabric shown in Ash



LE Plus SofTex[®]/cloth shown in Almond



XLE leather shown in Ash



Limited and Hybrid Limited perforated leather shown in Black

Also available in

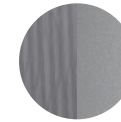


Black fabric

Also available in



Black SofTex[®]/cloth



Ash SofTex[®]/cloth

Also available in

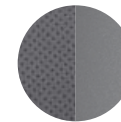


Black leather

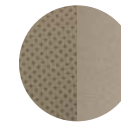


Almond leather

Also available in



Ash perforated leather



Almond perforated leather

Wheels



LE 18-in. split 5-spoke alloy wheels



LE Plus and XLE 18-in. split 5-spoke machined-face alloy wheels



Limited and Hybrid Limited 19-in. 5-spoke Chromtec[®] alloy wheels

LE



Exterior Features

- Projector-beam halogen smoked-chrome-accent headlights
- 18-in. split 5-spoke alloy wheels
- Windshield wiper de-icer
- Color-keyed heated power outside mirrors with turn signal indicators and folding feature

Interior Features

- Seating for eight
- Soft-touch in-dash shelf with easy cable management
- 24.5-liter soft-touch roll-top center console with removable utility tray
- Second- and third-row 60/40 split, sliding and reclining fold-flat seating
- Integrated backup camera¹ with projected path
- Entune™ Audio: 6.1-in. high-resolution touch-screen display with Intelligent Touch controls, Bluetooth^{®2} wireless technology and advanced voice recognition³
- 3.5-in. LCD Multi-Information Display
- 6-way adjustable driver's seat
- 4-way adjustable front passenger seat

LE Plus

Adds to or replaces features offered on LE



Exterior Features

- 18-in. split 5-spoke machined-face alloy wheels
- Integrated fog lights
- Flip-up rear hatch window
- Adjustable power liftgate with jam protection

Interior Features

- Entune™ Audio Plus: 6.1-in. high-resolution touch-screen display, HD Radio™⁴ and SiriusXM All Access Radio⁵
- SofTex^{®9}/cloth seats with contrast stitching
- 8-way power-adjustable driver's seat
- Three-zone automatic climate control with separate second-row control panel and individual temperature settings for driver

XLE

Adds to or replaces features offered on LE Plus



Exterior Features

- Power tilt/slide moonroof with sunshade and jam protection
- Chromtec[®] roof rails

Interior Features

- Entune™ Premium Audio with Navigation⁶ and App Suite⁷ and 8-in. high-resolution touch-screen display
- 4.2-in. color LCD Multi-Information Display with turn-by-turn navigation⁸
- Leather-trimmed seats with heated front seats
- Second-row retractable window sunshades
- Auto-dimming rearview mirror
- HomeLink^{®8} universal transceiver
- Second-row 120V auxiliary AC power outlet
- Smart Key System⁹ with Push Button Start
- Driver Easy Speak — driver voice amplification

Options

- Rear-seat Blu-ray Disc™ entertainment system
- Seating for seven with second-row captain's chairs

Limited

Adds to or replaces features offered on XLE



Exterior Features

- 19-in. 5-spoke Chromtec[®] alloy wheels
- Rear parking assist sonar
- LED Daytime Running Lights (DRL)
- Blind Spot Monitor (BSM)¹⁰ with Rear Cross-Traffic Alert (RCTA)¹¹

Interior Features

- Seating for seven with second-row captain's chairs
- Entune™ Premium JBL[®] Audio with Navigation⁶ and App Suite⁷ 8-in. high-resolution touch-screen display
- Perforated leather-trimmed seats with heated and ventilated front seats and memory function on driver's seat
- 4-way power-adjustable front passenger seat
- Blue LED ambient lighting

Options

- Driver Technology Package
 - Safety Connect^{®12}
 - Pre-Collision System (PCS)¹³ with Dynamic Radar Cruise Control (DRCC)¹⁴
 - Lane Departure Alert (LDA)¹⁵ with Automatic High Beam (AHB)¹⁶ headlights
- Rear-seat Blu-ray Disc™ entertainment system¹⁷
- Platinum Package
 - Includes Driver Technology Package
 - Panoramic moonroof
 - Heated steering wheel
 - Heated second-row captain's chairs

Hybrid Limited

Adds to or replaces features offered on Limited

Exterior Features

- Hybrid Synergy Drive[®] badges



Interior Features

- EV¹⁸/ECO Modes
- Energy monitor display
- Hybrid system power meter

1. See footnote 4 in Disclosures section. 2. See footnote 10 in Disclosures section. 3. See footnote 8 in Disclosures section. 4. See footnote 12 in Disclosures section. 5. See footnote 11 in Disclosures section. 6. See footnote 13 in Disclosures section. 7. See footnote 14 in Disclosures section. 8. See footnote 18 in Disclosures section. 9. See footnote 17 in Disclosures section. 10. See footnote 29 in Disclosures section. 11. See footnote 30 in Disclosures section. 12. See footnote 31 in Disclosures section. 13. See footnote 32 in Disclosures section. 14. See footnote 16 in Disclosures section. 15. See footnote 33 in Disclosures section. 16. See footnote 34 in Disclosures section. 17. Not available with Platinum Package. 18. See footnote 37 in Disclosures section.

Features¹

EXTERIOR	LE	LE PLUS	XLE	LIMITED	HYBRID LIMITED		LE	LE PLUS	XLE	LIMITED	HYBRID LIMITED
Projector-beam halogen smoked-chrome-accent headlights with auto on/off feature	S	S	S	S	S	18-in. split 5-spoke machined-face alloy wheels with P245/60R18 105S tires	—	S	S	—	—
Daytime Running Lights (DRL) with on/off feature	S	S	S	—	—	19-in. 5-spoke Chromtec® alloy wheels with P245/55R19 105S tires	—	—	—	S	S
LED Daytime Running Lights (DRL) with on/off feature	—	—	—	S	S	Black front and rear mudguards	S ³	S ³	S ³	S ³	S
Integrated fog lights	—	S	S	S	S	Washer-linked variable intermittent windshield wipers and intermittent rear wiper	S	S	S	S	S
Hybrid Synergy Drive® blue accent badges	—	—	—	—	S	Windshield wiper de-icer	S	S	S	S	S
Color-keyed heated power outside mirrors with turn signal indicators and folding feature	S	S	S	—	—	UV reduction glass on all windows	S	S	S	S	S
Color-keyed heated power outside mirrors with memory function, turn signal and blind spot warning indicators ² ; puddle lights and folding feature	—	—	—	S	S	High Solar Energy-Absorbing (HSEA) glass on front and rear side windows	S	S	S	S	S
Color-keyed outside door handles	S	S	S	S	S	Privacy glass on rear side, quarter and liftgate windows	S	S	S	S	S
Power tilt/slide moonroof with sunshade and jam protection	—	—	S	S	S	Flip-up rear hatch window	—	S	S	S	S
Panoramic moonroof with power sunshade and jam protection	—	—	—	P	P	Adjustable power liftgate with jam protection	—	S	S	S	S
18-in. split 5-spoke alloy wheels with P245/60R18 105S tires	S	—	—	—	—	Color-keyed rear spoiler with LED center high-mount stop light	S	S	S	S	S
						Chromtec® roof rails	—	—	S	S	S
INTERIOR											
Front and rear air conditioning with air filter and second- and third-row vents	S	—	—	—	—	technology), Entune® App Suite ¹⁴ Intelligent Touch controls, SiriusXM All Access Radio ¹¹ with 3-month complimentary trial, HD Radio ^{TM12} HD predictive traffic and Doppler weather overlay, AM/FM cache radio, and Gracenote® album cover art	—	—	—	S	S
Three-zone automatic climate control with air filter, separate second-row control panel, individual temperature settings for driver, front passenger and rear-seat passengers, and second- and third-row vents	—	S	S	S	S	3.5-in. LCD Multi-Information Display in meter cluster with odometer, current/average fuel economy, cruising range and ECO Driving Indicator	S	S	—	—	—
Integrated backup camera ⁴ with projected path	S	S	S	—	—	4.2-in. color LCD Multi-Information Display in meter cluster with odometer, current/average fuel economy, cruising range, average speed, AWD torque distribution (AWD gas models only), cruise control guide, navigation ¹³ with turn-by-turn directions, audio status, hands-free incoming call notices, telephone information, ECO Driving Indicator and energy monitor (hybrid models only)	—	—	S	S	S
Integrated backup camera ⁴ with dynamic gridlines	—	—	—	S	S	Rear-seat Blu-ray Disc™ entertainment system with 9-in. display, RCA jacks, remote and two wireless headphones ¹⁵	—	—	O	O	O
Entune™ Audio — includes the Entune™ Multimedia Bundle ⁵ (6.1-in. high-resolution touch-screen display, AM/FM CD player, MP3/WMA playback capability, six speakers, auxiliary audio jack, USB 2.0 port ⁶ with iPod® ⁶⁷ connectivity and control, advanced voice recognition ⁸ hands-free phone capability, phone book access and music streaming ⁹ via Bluetooth® ¹⁰ wireless technology), Intelligent Touch controls and integrated backup camera ⁴ display with projected path	S	—	—	—	—	Fabric-trimmed front- and second-row seats; 6-way adjustable driver's seat; 4-way adjustable front passenger seat; 60/40 split, sliding and reclining fold-flat second-row seats	S	—	—	—	—
Entune™ Audio Plus — includes the Entune™ Multimedia Bundle ⁵ (6.1-in. high-resolution touch-screen display, AM/FM CD player, MP3/WMA playback capability, six speakers, auxiliary audio jack, USB 2.0 port ⁶ with iPod® ⁶⁷ connectivity and control, advanced voice recognition ⁸ hands-free phone capability, phone book access and music streaming ⁹ via Bluetooth® ¹⁰ wireless technology), Intelligent Touch controls, SiriusXM All Access Radio ¹¹ with 3-month complimentary trial, HD Radio ^{TM12} HD traffic and weather in major metro areas	—	S	—	—	—	Fabric- and SofTex®-trimmed front- and second-row seats; 8-way power-adjustable driver's seat including power thigh support and lumbar support; 4-way adjustable front passenger seat; 60/40 split, sliding and reclining fold-flat second-row seats	—	S	—	—	—
Entune™ Premium Audio with Navigation ¹³ and App Suite ¹⁴ — includes the Entune™ Multimedia Bundle ⁵ (8-in. high-resolution touch-screen with split-screen display, AM/FM CD player, MP3/WMA playback capability, six speakers, auxiliary audio jack, USB 2.0 port ⁶ with iPod® ⁶⁷ connectivity and control, advanced voice recognition ⁸ hands-free phone capability, phone book access and music streaming ⁹ via Bluetooth® ¹⁰ wireless technology), Entune® App Suite ¹⁴ Intelligent Touch controls, SiriusXM All Access Radio ¹¹ with 3-month complimentary trial, HD Radio ^{TM12} HD predictive traffic and Doppler weather overlay, AM/FM cache radio, and Gracenote® album cover art	—	—	S	—	—	Leather-trimmed front- and second-row seats; heated front seats; 8-way power-adjustable driver's seat including power thigh support and lumbar support; 4-way adjustable front passenger seat; 60/40 split, sliding and reclining fold-flat second-row seats	—	—	S	—	—
Entune™ Premium JBL® Audio with Navigation ¹³ and App Suite ¹⁴ — includes the Entune™ Multimedia Bundle ⁵ (8-in. high-resolution touch-screen with split-screen display, AM/FM CD player, MP3/WMA playback capability, 12 JBL® GreenEdge™ speakers, auxiliary audio jack, USB 2.0 port ⁶ with iPod® ⁶⁷ connectivity and control, advanced voice recognition ⁸ hands-free phone capability, phone book access and music streaming ⁹ via Bluetooth® ¹⁰ wireless	—	—	S	—	—	Leather-trimmed front- and second-row seats; heated front seats; 8-way power-adjustable driver's seat including power thigh support and lumbar support; 4-way adjustable front passenger seat; second-row captain's chairs with side table	—	—	O	—	—
						Perforated leather-trimmed heated and ventilated front-row seats; 8-way power-adjustable driver's seat with memory function and power thigh support and lumbar support; 4-way power-adjustable front passenger seat; perforated leather-trimmed second-row captain's chairs with side table	—	—	—	S	S
						Perforated leather-trimmed heated and ventilated front-row seats; 8-way power-adjustable driver's seat with memory function and power thigh support and lumbar support; 4-way power-adjustable front passenger seat; perforated leather-trimmed heated second-row captain's chairs with side table	—	—	—	P	P

S = Standard O = Optional — = Not Available P = Feature is available as part of an option package.

Features (continued)

INTERIOR (continued)	LE	LE PLUS	XLE	LIMITED	HYBRID LIMITED	LE	LE PLUS	XLE	LIMITED	HYBRID LIMITED
Fabric-trimmed 60/40 split fold-flat third-row seat with sliding headrests and recline function	S	—	—	—	—	—	—	—	S	S
Fabric- and SofTex®-trimmed 60/40 split fold-flat third-row seat with sliding headrests and recline function	—	S	—	—	—	—	—	—	S	S
SofTex®-trimmed 60/40 split fold-flat third-row seat with sliding headrests and recline function	—	—	S	S	S	S	S	—	—	—
Cruise control	S	S	S	S	S	—	—	S	S	S
Dynamic Radar Cruise Control (DRCC) ¹⁶	—	—	—	P	P	S	S	S	—	—
Gated shift lever with knob, silver metallic shift bezel and LED indicator illumination	S	—	—	—	—	—	—	—	S	S
Gated shift lever with silver metallic/leather-trimmed knob, silver metallic shift bezel and LED indicator illumination	—	S	S	S	S	S	S	S	S	S
Tilt/telescopic 3-spoke steering wheel with metallic accents and audio, Multi-Information Display, Bluetooth ^{®10} hands free-phone, voice-command and cruise controls	S	—	—	—	—	—	—	S	S	S
Leather-trimmed tilt/telescopic 3-spoke steering wheel with metallic accents and audio, Multi-Information Display, Bluetooth ^{®10} hands-free phone, voice-command and cruise controls	—	S	—	—	—	—	—	S	S	—
Leather-trimmed tilt/telescopic 3-spoke steering wheel with metallic accents and audio, Multi-Information Display, Bluetooth ^{®10} hands-free phone, voice-command, cruise control and multimedia controls	—	—	S	S	S	—	—	S	S	S
Leather-trimmed heated tilt/telescopic 3-spoke steering wheel with metallic accents and audio, Multi-Information Display, Bluetooth ^{®10} hands-free phone, Dynamic Radar Cruise Control (DRCC) ¹⁶ and multimedia controls	—	—	—	P	P	S	S	S	S	S
Optitron instrumentation with blue-illuminated speedometer and tachometer, and 3.5-in. LCD Multi-Information Display	S	S	—	—	—	—	—	S	S	S
Optitron instrumentation with blue-illuminated speedometer and tachometer/hybrid system power meter (hybrid models only), and 4.2-in. color LCD Multi-Information Display	—	—	S	S	S	—	—	S	S	S
Soft-touch upper door trim with metallic accent, fabric-covered door armrest area with black interior door handles	S	—	—	—	—	—	—	S	S	—
Soft-touch upper door trim with metallic accent, leatherette-trimmed door armrest area with black interior door handles	—	S	—	—	—	—	—	S	S	—
Soft-touch upper door trim with metallic accent, leatherette-trimmed door armrest area with satin chrome interior door handles	—	—	S	—	—	—	—	S	S	—
SAFETY AND CONVENIENCE						LATCH (Lower Anchors and Tethers for Children) includes lower anchors and tethers on outboard second-row seats and tether anchor on middle of second- and third-row seats				
Star Safety System™ — includes Enhanced Vehicle Stability Control (VSC) ¹⁹ , Traction Control (TRAC), Anti-lock Brake System (ABS), Electronic Brake-force Distribution (EBD), Brake Assist (BA) ²⁰ and Smart Stop Technology® (SST) ²¹	S	S	S	S	—	S	S	S	S	S
Star Safety System™ — includes Electronically Controlled Braking (ECB), Vehicle Dynamics Integrated Management (VDIM), ²² Enhanced Vehicle Stability Control (VSC) ¹⁹ , Traction Control (TRAC), Anti-lock Brake System (ABS), Electronic Brake-force Distribution (EBD), Brake Assist (BA) ²⁰ and Smart Stop Technology® (SST) ²¹	—	—	—	—	S	S	S	S	S	S
Driver and front passenger Advanced Airbag System ²³	S	S	S	S	S	S	S	S	S	S
Driver and front passenger seat-mounted side airbags, driver knee airbag, front passenger seat-cushion airbag and all-row Roll-sensing Side Curtain Airbags (RSCA) ²³	S	S	S	S	S	S	S	S	S	S
Driver and front passenger Whiplash-Injury-Lessening (WIL) ²⁴ seats	S	S	S	S	S	S	S	S	S	S
Driver and front passenger seatbelt warning sensor	S	S	S	S	S	S	S	—	—	—
3-point seatbelts for all seating positions; driver-side Emergency Locking Retractor (ELR) and Automatic/Emergency Locking Retractor (ALR/ELR) on all passenger belts	S	S	S	S	S	—	—	S	S	S
Adjustable front seatbelt shoulder anchors and driver and front passenger seatbelt pretensioners with force limiters	S	S	S	S	S	—	—	—	S	S
Soft-touch upper door trim with wood-grain accent, leatherette-trimmed door armrest area with satin chrome interior door handles	—	—	—	—	—	S	S	S	—	—
Blue LED ambient lighting on interior of front and rear doors and in-dash shelf	—	—	—	—	—	—	—	—	S	S
Remote keyless entry system with remote illuminated entry	S	S	—	—	—	—	—	S	S	S
Smart Key System ¹⁷ on front doors and liftgate with Push Button Start, and remote keyless entry system with illuminated entry	—	—	S	S	S	—	—	S	S	S
Power windows with driver and front passenger auto up/down and jam protection	S	S	S	—	—	—	—	S	—	—
Power windows with auto up/down and jam protection in all positions	—	—	—	—	—	—	—	—	S	S
Rear liftgate window defogger	S	S	S	S	S	—	—	S	S	S
Power door locks with shift-linked automatic lock/unlock feature	S	S	S	S	S	—	—	S	S	S
Day/night rearview mirror	S	S	—	—	—	—	—	S	S	S
Auto-dimming rearview mirror	—	—	S	S	S	—	—	S	S	S
Overhead console with maplights, sunglasses storage and conversation mirror	S	S	—	—	—	—	—	S	S	—
Overhead console with maplights, sunglasses storage, conversation mirror and HomeLink ^{®18} universal transceiver	—	—	S	S	S	—	—	S	S	S
24.5-liter soft-touch roll-top center console with removable utility tray	S	S	S	S	S	—	—	S	S	S
Soft-touch in-dash shelf with easy cable management feature	S	S	S	S	S	—	—	S	S	S
Eight cup holders and four bottle holders	S	S	S	S	S	—	—	S	S	S
Dual sun visors with sliding function and illuminated vanity mirrors	S	S	S	S	S	—	—	S	S	S
Three 12V auxiliary power outlets (two front and one second-row)	S	S	S	S	S	—	—	S	S	S
One 120V auxiliary AC power outlet (second-row)	—	—	S	S	S	—	—	S	S	S
Four cargo area tie-down cargo hooks	S	S	S	S	S	—	—	S	S	S
Cargo area lights	S	S	S	S	S	—	—	S	S	S
Front- and second-row-seat reading lights	S	S	S	S	S	—	—	S	S	S
Second-row retractable window sunshades	—	—	S	S	S	—	—	S	S	S
Digital clock	S	S	S	S	S	—	—	S	S	S
Driver Easy Speak — driver voice amplification	—	—	S	S	S	—	—	S	S	S

S = Standard O = Optional — = Not Available P = Feature is available as part of an option package.

See numbered footnotes in Disclosures section.

Features (continued)

SAFETY AND CONVENIENCE (continued)	LE	LE PLUS	XLE	LIMITED	HYBRID LIMITED	LE	LE PLUS	XLE	LIMITED	HYBRID LIMITED
Safety Connect ^{®31} — includes Emergency Assistance, Stolen Vehicle Locator, Roadside Assistance and Automatic Collision Notification. Available by subscription.	—	—	—	P	P	—	—	—	P	P
						—	—	—	P	P
PACKAGES AND OPTIONS										
Driver Technology Package — includes Safety Connect ^{®31} Pre-Collision System (PCS) ³² with Dynamic Radar Cruise Control (DRCC) ¹⁶ , Lane Departure Alert (LDA) ³³ with Automatic High Beam (AHB) ³⁴	—	—	—	P ³⁵	P ³⁵	—	—	O	S	S
						—	—	O	O ³⁶	O ³⁶
Platinum Package — includes Driver Technology Package [Safety Connect ^{®31} Pre-Collision System (PCS) ³² with Dynamic Radar Cruise Control (DRCC) ¹⁶ , Lane Departure Alert (LDA) ³³ with Automatic High Beam (AHB)] ³⁴ , panoramic moonroof, heated steering wheel, heated perforated leather second-row captain's chairs	—	—	—	P	P	S = Standard O = Optional — = Not Available P = Feature is available as part of an option package.				

Specifications

MECHANICAL AND PERFORMANCE

	LE	LE PLUS	XLE	LIMITED	HYBRID LIMITED
ENGINE					
Gasoline engine — 2.7-Liter 4-Cylinder Double Overhead Cam (DOHC) 16-Valve with Dual Variable Valve Timing with intelligence (VVT-i); 185 hp @ 5800 rpm, 184 lb.-ft. @ 4200 rpm	Standard	NA	NA	NA	NA
Gasoline engine — 3.5-Liter V6 Double Overhead Cam (DOHC) 24-Valve with Dual Variable Valve Timing with intelligence (VVT-i); 270 hp @ 6200 rpm, 248 lb.-ft. @ 4700 rpm	Available	Standard	Standard	Standard	NA
Hybrid engine — 3.5-Liter V6 Double Overhead Cam (DOHC) 24-Valve with Variable Valve Timing with intelligence (VVT-i); EV ³⁷ and ECO Modes; 280 hybrid system net hp (209 kW)	NA	NA	NA	NA	Standard
EMISSION RATING					
Ultra Low Emission Vehicle II (ULEV-II)	Standard	Standard	Standard	Standard	NA
Super Ultra Low Emission Vehicle (SULEV) ³⁸	NA	NA	NA	NA	Standard
Evaporative Emission Certification — Zero Evaporation	NA	NA	NA	NA	Standard
ELECTRIC MOTORS (two, front and rear)					
Permanent magnet synchronous motors drive front and rear wheels	NA	NA	NA	NA	Standard
TRACTION BATTERY					
Battery type: sealed Nickel-Metal Hydride (Ni-MH)	NA	NA	NA	NA	Standard
TRANSMISSION					
6-speed Electronically Controlled automatic Transmission with intelligence (ECT-i), sequential shift mode and Snow Mode	Standard	Standard	Standard	Standard	NA
Electronically controlled Continuously Variable Transmission (ECVT) with sequential shift mode	NA	NA	NA	NA	Standard
DRIVETRAIN					
Front-Wheel Drive (FWD)	Standard	Standard	Standard	Standard	NA
Dynamic Torque-Control AWD System	Available	Available	Available	Available	NA
Electronic On-Demand AWD system with intelligence (AWD-i)	NA	NA	NA	NA	Standard
BODY CONSTRUCTION					
Reinforced unibody	Standard	Standard	Standard	Standard	Standard
SUSPENSION					
Independent MacPherson strut front suspension; double-wishbone rear suspension with front and rear stabilizer bars	Standard	Standard	Standard	Standard	Standard
STEERING					
Electric Power Steering (EPS); power-assisted rack-and-pinion	Standard	Standard	Standard	Standard	Standard
Turning circle diameter, curb to curb (ft.)	38.7	38.7	38.7	38.7	38.7
BRAKES					
Power-assisted ventilated 12.9-in. front disc brakes; solid 12.2-in. rear disc brakes and Star Safety System™	Standard	Standard	Standard	Standard	NA
Power-assisted ventilated 12.9-in. front disc brakes; solid 12.2-in. rear disc brakes with Electronically Controlled Braking (ECB) system, integrated regenerative braking and Star Safety System™	NA	NA	NA	NA	Standard

See numbered footnotes in Disclosures section.

Specifications (continued)

EXTERIOR DIMENSIONS (in.)	LE	LE PLUS	XLE	LIMITED	HYBRID LIMITED
Overall length/width	191.1/75.8	191.1/75.8	191.1/75.8	191.1/75.8	191.1/75.8
Unloaded height	68.1	68.1	68.1	68.1	68.1
Coefficient of drag (Cd)	0.34	0.33	0.33	0.33	0.34
Wheelbase	109.8	109.8	109.8	109.8	109.8
Track (front/rear) FWD and AWD	64.4/64.2	64.4/64.2	64.4/64.2	64.4/64.2	64.4/64.2
INTERIOR DIMENSIONS (in.) (front/second-row/third-row seats)					
Head room without moonroof	40.7/39.9/35.9	40.7/39.9/35.9	NA	NA	NA
Head room with moonroof	NA	NA	39.5/39.6/35.9	39.5/39.6/35.9	39.5/39.6/35.9
Shoulder room	59.3/59.6/55.0	59.3/59.6/55.0	59.3/59.0/55.0	59.3/59.0/55.0	59.3/59.0/55.0
Hip room	57.2/57.1/45.6	57.2/57.1/45.6	57.2/57.1/45.6	57.2/57.1/45.6	57.2/57.1/45.6
Leg room	44.2/38.4/27.7	44.2/38.4/27.7	44.2/38.4/27.7	44.2/38.4/27.7	44.2/38.4/26.7
OFF-HIGHWAY					
Approach/departure angle (degrees)	18.0/23.1	18.0/23.1	18.0/23.1	18.0/23.1	17.6/23.9
Ground clearance (in.)	8.0	8.0	8.0	8.0	8.0
WEIGHTS AND CAPACITIES					
Curb weight (lb.) (4-cylinder/V6 FWD/V6 AWD)	4134/4244/4398	NA/4244/4398	NA/4310/4464	NA/4354/4508	NA/NA/4861
Gross Vehicle Weight Rating (GVWR) (lb.) (4-cylinder/V6 FWD/V6 AWD)	5665/5840/6000	NA/5840/6000	NA/5840/6000	NA/5840/6000	NA/NA/6270
EPA passenger volume (cu. ft.) without moonroof (front/second-row/third-row seats)	61.7/52.8/30.4	61.7/52.8/30.4	NA	NA	NA
EPA passenger volume (cu. ft.) with moonroof (front/second-row/third-row seats)	NA	NA	59.9/51.9/30.4	59.9/51.9/30.4	59.9/51.9/29.3
Cargo volume (cu. ft.) ³⁹ behind front/second-row/third-row seats	83.7/42.3/13.8	83.7/42.3/13.8	83.2/42.3/13.8	83.2/42.3/13.8	83.2/42.3/13.8
Fuel tank (gal.)	19.2	19.2	19.2	19.2	17.2
Seating capacity (standard/optional)	8	8	8/7	7	7
TOWING (lb.) ⁴⁰					
4-cylinder	1500	NA	NA	NA	NA
V6	2000	2000	5000	5000	NA
Hybrid	NA	NA	NA	NA	3500
Heavy-duty radiator with engine oil cooler, 200-watt fan coupling, supplemental transmission oil cooler and 150-amp alternator	NA	NA	Standard	Standard	NA
Heavy-duty radiator with engine oil cooler, 240-watt fan coupling and supplemental transmission oil cooler	NA	NA	NA	NA	Standard
TIRES					
Type All-Season steel-belted radials	Standard	Standard	Standard	Standard	Standard
Spare Temporary spare tire	Standard	Standard	Standard	Standard	Standard
MILEAGE ESTIMATES (mpg city/highway) ⁴¹					
4-cylinder FWD	20/25	NA	NA	NA	NA
V6 FWD	19/25	19/25	19/25	19/25	NA
V6 AWD	18/24	18/24	18/24	18/24	NA
Hybrid	NA	NA	NA	NA	27/28

Accessories

A wide range of Genuine Toyota Accessories is available to help make driving your Highlander even more fun. Now your Highlander can reflect your personal style. There's something for everyone. Some accessories may not be available in all regions of the country. For a complete list of accessories, go to toyota.com/highlander.

All-weather floor mats¹
Body side moldings
Cargo cover
Cargo liner
Cargo net — envelope²
Cargo tote

Carpet cargo mat
Carpet floor mats¹
Door edge guards
Emergency assistance kit
First aid kit
Mudguards

Paint protection film³
Rear bumper appliqué
Rear bumper protector
Remote Engine Starter⁴
Roof rail cross bars
Running boards⁵

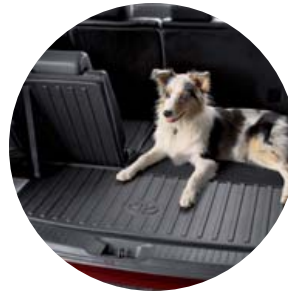
Tow hitch receiver with towing wire harness⁶
Trailer ball and ball mount⁶
Vehicle Intrusion Protection (VIP)
RS3200 Plus Security System with
Glass Breakage Sensor (GBS)⁷
Wireless headphones⁸



All-weather floor mats¹



Cargo cover



Cargo liner



Cargo net — envelope²



Carpet floor mats¹



Mudguards



Rear bumper protector



Roof rail cross bars (LE, LE Plus)



Roof rail cross bars (XLE, Limited)



Running boards⁵

1. See footnote 42 in Disclosures section. 2. See footnote 39 in Disclosures section. 3. See footnote 43 in Disclosures section. 4. See footnote 44 in Disclosures section. 5. See footnote 45 in Disclosures section. 6. See footnote 40 in Disclosures section. 7. See footnote 46 in Disclosures section. 8. See footnote 15 in Disclosures section.

CARS BUILT FOR THE WAY YOU LIVE

At Toyota, we build cars for how you live. From building advanced safety features designed to help prevent crashes to driving cross-country to understand how we can make your driving experience better, our work starts with understanding your needs. Building cars for how you live also means thinking about tomorrow—from fuel efficiency and environmental innovations, to things beyond cars, like a bicycle that you can control with your mind. And because what we learn building cars can help improve lives in other places, we do things like help communities rebuild their homes quickly after a disaster and work with soup kitchens to help them serve more people faster. Toyota. Built for how you live. Together we are going places.

TOYOTA FINANCIAL SERVICES



Toyota Rewards Visa®

Toyota Financial Services (TFS)[†] is a leading provider of automotive financial services, offering an extensive line of financing plans along with a variety of vehicle and payment protection products to Toyota customers and dealers in the U.S. For more information on TFS products and services, visit www.toyotafinancial.com

Toyota helps you get more out of every dollar you spend. By rewarding you for every purchase you make, the Toyota Rewards Visa® adds even more value to doing the things you love.

Turn everything you buy into points to redeem toward parts, accessories or an eligible vehicle purchase or lease at your Toyota dealer. Earn 5 points for every \$1 spent at participating Toyota dealers and 1 point for every \$1 spent everywhere else Visa is accepted.*

Visit www.toyotarewardsvisa.com for complete details.

*On approved credit. You must have a valid permanent home address in the 50 United States or the District of Columbia. Terms, conditions and restrictions apply and are fully described in the Toyota Rewards Visa Cardmember Agreement and the Toyota Rewards Program Terms and Conditions received with your card. Points earned are based on net purchases. Points-earning maximums apply and points will expire as described in the Rewards Terms and Conditions. Redemption only available at participating Toyota dealerships in the continental U.S. and Alaska. Points cannot be redeemed for cash. Please contact your participating Toyota dealer for information regarding restrictions your dealer may impose on the use of credit cards related to vehicle purchases or leases. The creditor and issuer of the Toyota Rewards Visa is Toyota Financial Savings Bank. Toyota Financial Services is a service mark used by Toyota Financial Savings Bank.

[†]Toyota Financial Services is a service mark for Toyota Motor Credit Corporation and Toyota Motor Insurance Services, Inc.

WARRANTIES

Every Toyota Car, Truck and SUV is built to exceptional standards. And that's not idle boasting. We back it up with these Limited Warranty Coverages:

Basic: 36 months/36,000 miles (all components other than normal wear and maintenance items).

Hybrid-Related Component Coverage: Hybrid-related components, including the HV battery, battery control module, hybrid control module and inverter with converter, are covered for 8 years/100,000 miles. The HV battery may have longer coverage under emissions warranty. Refer to applicable *Warranty and Maintenance Guide* for details.

Powertrain: 60 months/60,000 miles (engine, transmission/transaxle, drive system, seatbelts and airbags).

Rust-Through: 60 months/unlimited miles (corrosion perforation of sheet metal).

Emissions: Coverages vary under Federal and California regulations. Refer to applicable *Warranty and Maintenance Guide* for details.

Note: Highlander Hybrid models are not designed to be driven off-road.

Toyota Highlander is designed to meet most off-road driving requirements. Abusive use may result in bodily harm or damage. Toyota encourages responsible operation to protect you, your vehicle and the environment. Seatbelts should be worn at all times. Please do not allow passengers to ride in the cargo area. Towing receiver hitches/ball mount kits are not intended to provide crash protection.

Accessories: For Genuine Toyota Accessories purchased at the time of the new vehicle purchase, the Toyota Accessory Warranty coverage is in effect for 36 months/36,000 miles from the vehicle's in-service date, which is the same coverage as the Toyota New Vehicle Limited Warranty.

For Genuine Toyota Accessories purchased after the new vehicle purchase the coverage is 12 months, regardless of mileage, from the date the accessory was installed on the vehicle, or the remainder of any applicable new vehicle warranty, whichever provides greater coverage, with the exception of car covers. Car covers are warranted for 12 months from the date of purchase and do not assume any coverage under the Toyota New Vehicle Limited Warranty.

You may be eligible for transportation assistance if it's necessary that your vehicle be kept overnight for repairs covered under warranty. Please see your authorized Toyota dealership for further details.

For complete details about Toyota's warranties, please visit www.toyota.com, refer to the applicable *Warranty and Maintenance Guide* or see your Toyota dealer.

For details on vehicle specifications, standard features and available equipment in your area, contact your Toyota dealer. A vehicle with particular equipment may not be available at the dealership. Ask your Toyota dealer to help locate a specifically equipped vehicle.

All information presented herein is based on data available at the time of posting, is subject to change without notice and pertains specifically to mainland U.S.A. vehicles only. Prototypes shown. Actual production vehicles may vary.

Disclosures

1. Toyota strives to build vehicles to match customer interest and thus they typically are built with popular options and option packages. Not all options/packages are available separately and some may not be available in all regions of the country. See toyota.com for information about options/packages commonly available in your area. If you would prefer a vehicle without any or with different options, contact your dealer to check for current availability or the possibility of placing a special order. 2. Do not rely exclusively on the blind spot mirrors. Always look over your shoulder and use your turn signal. There are limitations to the function, detection, range and clarity of the mirrors. To learn more, see your *Owner's Manual*. 3. AWD models only. 4. The backup camera does not provide a comprehensive view of the rear area of the vehicle. You should also look around outside your vehicle and use your mirrors to confirm rearward clearance. Cold weather will limit effectiveness and view may become cloudy. 5. Entune™ is a trademark of Toyota Motor Corporation. Always drive safely, obey traffic laws and focus on the road while driving. Services vary by phone/carrier. Functionality depends on many factors. Services subject to change. For enrollment and more details, see toyota.com/entune. 6. May not be compatible with all mobile phones, MP3/WMA players and like models. 7. iPod® and iPhone® are registered trademarks of Apple Inc. All rights reserved. 8. Advanced voice recognition capabilities vary by head unit. 9. Apps/services vary by phone/carrier; functionality depends on many factors. Select apps use large amounts of data; you are responsible for charges. Apps and services subject to change. See toyota.com/entune for details. 10. Concentrating on the road should always be your first priority while driving. Do not use the hands-free phone system if it will distract you. The Bluetooth® word mark and logos are registered trademarks owned by Bluetooth SIG, Inc. and any use of such marks by Toyota is under license. A compatible Bluetooth®-enabled phone must first be paired. Phone performance depends on software, coverage and carrier. 11. SiriusXM services require a subscription after 3-month trial period. **Subscriptions governed by SiriusXM Customer Agreement available at www.siriusxm.com. If you decide to continue your SiriusXM service at the end of your complimentary trial, the plan you choose will automatically renew and bill at then-current rates until you call 1-866-635-2349 to cancel.** Fees and programming subject to change. Available only to those at least 18 years of age in the 48 contiguous United States and D.C. 12. Be sure to obey traffic regulations and maintain awareness of road and traffic conditions at all times. HD Radio™ Technology manufactured under license from iBiquity Digital Corporation U.S. and Foreign Patents. HD Radio™ and the HD, HD Radio, and "Arc" logos are proprietary trademarks of iBiquity Digital Corp. 13. Be sure to obey traffic regulations and maintain awareness of road and traffic conditions at all times. Availability and accuracy of the information provided by the navigation system is dependent upon many factors. Use common sense when relying on information provided. Services and programming subject to change. Services not available in every city or roadway; updates may be available at an additional cost from your dealer. See your *Navigation System Owner's Manual* for details. 14. Be sure to obey traffic regulations and maintain awareness of road and traffic conditions at all times. Apps/services vary by phone/carrier; functionality depends on many factors. Select apps use large amounts of data; you are responsible for charges. Apps and services subject to change. See toyota.com/entune for details. 15. Headphones are for passenger use only. Do not use while driving vehicle. 16. Dynamic Radar Cruise Control is designed to assist the driver and is not a substitute for safe and attentive driving practices. Please see your *Owner's Manual* for important instructions and cautions. 17. The Smart Key System may interfere with some pacemakers or cardiac defibrillators. If you have one of these medical devices, please talk to your doctor to see if you should deactivate this system. 18. HomeLink® is a registered trademark of Johnson Controls, Inc. 19. Vehicle Stability Control (VSC) is an electronic system designed to help the driver maintain vehicle control under adverse conditions. It is not a substitute for safe driving practices. Factors including speed, road conditions and driver steering input can all affect whether VSC will be effective in preventing a loss of control. Please see your *Owner's Manual* for further details. 20. Brake Assist is designed to help the driver take full advantage of the benefits of ABS. It is not a substitute for safe driving practices. Braking effectiveness also depends on proper brake-system maintenance and tire and road conditions. 21. Smart Stop Technology® operates only in the event of certain simultaneous brake and accelerator pedal applications. When engaged, the system will reduce power to help the brakes bring the vehicle to a stop. Factors including speed, road conditions and driver input can all impact stopping distance. Smart Stop Technology® is not a substitute for safe and attentive driving and does not guarantee instant stopping. Please see your *Owner's Manual* for further details. 22. Vehicle Dynamics Integrated Management (VDIM) is an electronic system designed to help the driver maintain vehicle control under adverse conditions. It is not a substitute for safe driving practices. Factors including speed, road conditions and driver steering input can all affect whether VDIM will be effective in preventing a loss of control. Please see your *Owner's Manual* for further details. 23. All the airbag (AB) systems are Supplemental Restraint Systems. All ABs (if installed) are designed to inflate only under certain conditions and in certain types of severe collisions: frontal and knee ABs typically inflate in frontal collisions; side and side curtain ABs in side collisions; Roll-Sensing Curtain ABs at a severe tilt degree, roll or lateral G-force. In all other accidents, the ABs will not inflate. To decrease the risk of injury from an inflating AB, always wear seatbelts, sit upright in the middle of the seat as far back as possible and do not lean against the door. Do not put objects in front of an AB or around the seatback. Do not use a rearward-facing child seat in any front passenger seat. The force of an inflating AB may cause serious injury or death. See your *Owner's Manual* for further information/warnings. 24. Whiplash-Injury-Lessening front seats can help reduce the severity of whiplash injury in certain rear-end collisions. 25. The Toyota Tire Pressure Monitor alerts the driver when tire pressure is critically low. For optimal tire wear and performance, tire pressure should be checked regularly with a gauge; do not rely solely on the monitor system. See your *Owner's Manual* for details. 26. HAC is designed to help minimize backward rolling on steep ascents. It is not a substitute for safe driving judgment and practices. Factors including grade, surface conditions and driver input can all affect whether HAC will be effective in preventing a loss of control. Please see your *Owner's Manual* for further details. 27. Downhill Assist Control (DAC) is designed to help the driver maintain vehicle control and speed on steep, downhill descents. It is not a substitute for safe driving judgment and practices. Factors including speed, grade, surface conditions and driver input can all affect whether DAC will be effective in preventing a loss of control. Please see your *Owner's Manual* for further details. 28. The engine immobilizer is a state-of-the-art anti-theft system. When you insert your key into the ignition switch or bring a Smart Key fob into the vehicle, the key transmits an electronic code to the vehicle. The engine will only start if the code in the transponder chip inside the key/fob matches the code in the vehicle's immobilizer. Because the transponder chip is embedded in the key/fob, it can be costly to replace. If you lose a key or fob, your Toyota dealer can help, or you can find a qualified independent locksmith to perform high-security key services by consulting your local Yellow Pages or by contacting at www.aloa.org. 29. Do not rely exclusively on the Blind Spot Monitor. Always look over your shoulder and use your turn signal. There are several limitations to the function, detection, range and clarity of the monitor. For a complete list of limitations and directions regarding use of the monitor, please see the *Owner's Manual*. 30. Do not rely exclusively on the Rear Cross-Traffic Alert system. Always look over your shoulder and use your mirrors to confirm rear clearance. There are limitations to the function, detection, range and clarity of the system. To learn more, see your *Owner's Manual*. 31. Contact with the Safety Connect® response center is dependent upon the telematics device being in operative condition, cellular connection availability, navigation map data and GPS satellite signal reception, which can limit the ability to reach the response center or receive emergency service support. Enrollment and Telematics Subscription Service Agreement required. A variety of subscription terms is available; charges vary by subscription term selected. 32. The Pre-Collision System is designed to help reduce the crash speed and damage in certain frontal collisions only. They are not collision-avoidance systems and are not substitutes for safe and attentive driving. System effectiveness depends on many factors such as speed, driver input and road conditions. See your *Owner's Manual* for further information. 33. Lane Departure Alert is designed to read the lane markers under certain conditions, and provide visual and audible alerts when lane departure is detected. It is not a collision-avoidance system or a substitute for safe and attentive driving. Effectiveness depends on many factors. See *Owner's Manual* for more information. 34. The automatic high beam system operates at speeds above 21 mph. Situations such as a dirty windshield, variable weather, lighting conditions and hilly terrain will limit effectiveness, requiring the driver to manually turn off. See *Owner's Manual* for details. 35. Included with Platinum Package. 36. Not available with Platinum Package. 37. CAUTION! When driving a hybrid vehicle, pay special attention to the area around the vehicle. Because there is little vehicle noise in electric-only mode, pedestrians, people riding bicycles or other people and vehicles in the area may not be aware of the vehicle starting off or approaching them, so take extra care while driving. 38. Meets Tier-2/Bin-3 Federal emissions standard. 39. Cargo and load capacity limited by weight and distribution. 40. Before towing, confirm your vehicle and trailer are compatible, hooked up and loaded properly and that you have any necessary additional equipment. Do not exceed any Weight Ratings and follow all instructions in your *Owner's Manual*. The maximum you can tow depends on the total weight of any cargo, occupants and available equipment. Calculated with new SAE J2807 method. 41. 2015 EPA-estimated mileage. Actual mileage will vary. 42. This floor mat was designed specifically for use in your model and model year vehicle and SHOULD NOT be used in any other vehicle. To avoid potential interference with pedal operation, each mat must be secured with either quarter-turn fasteners or retention hooks/clips. Do not install a floor mat on top of an existing floor mat. 43. The Toyota Genuine Accessory Warranty will only apply when the installation is performed by a trained Toyota-approved installer. Please see dealer for details. 44. Available only for vehicle with Smart Key System. Use only if aware of circumstances surrounding the vehicle at time of start. Operate only when legal and safe to do so (e.g., car uncovered in open area with no people or pets inside or nearby). See usage precautions in *Owner's Manual*. 45. FWD models require purchase of Genuine Toyota Highlander mudguards at an additional cost. 46. Available for vehicles with factory security.



For Toyota Mobility program details, go to www.toyota.com/mobility or call the Toyota Customer Assistance Center at 1-800-331-4331

